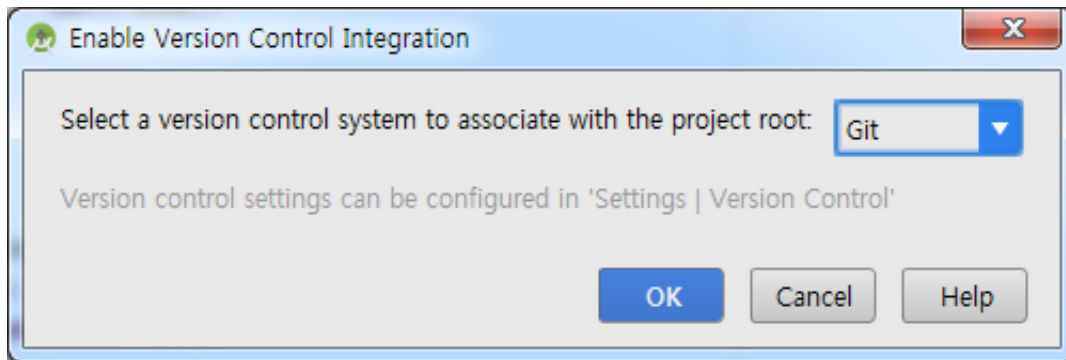
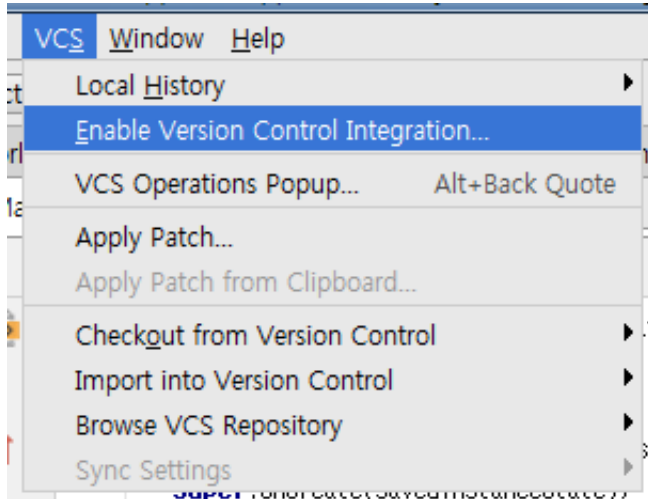
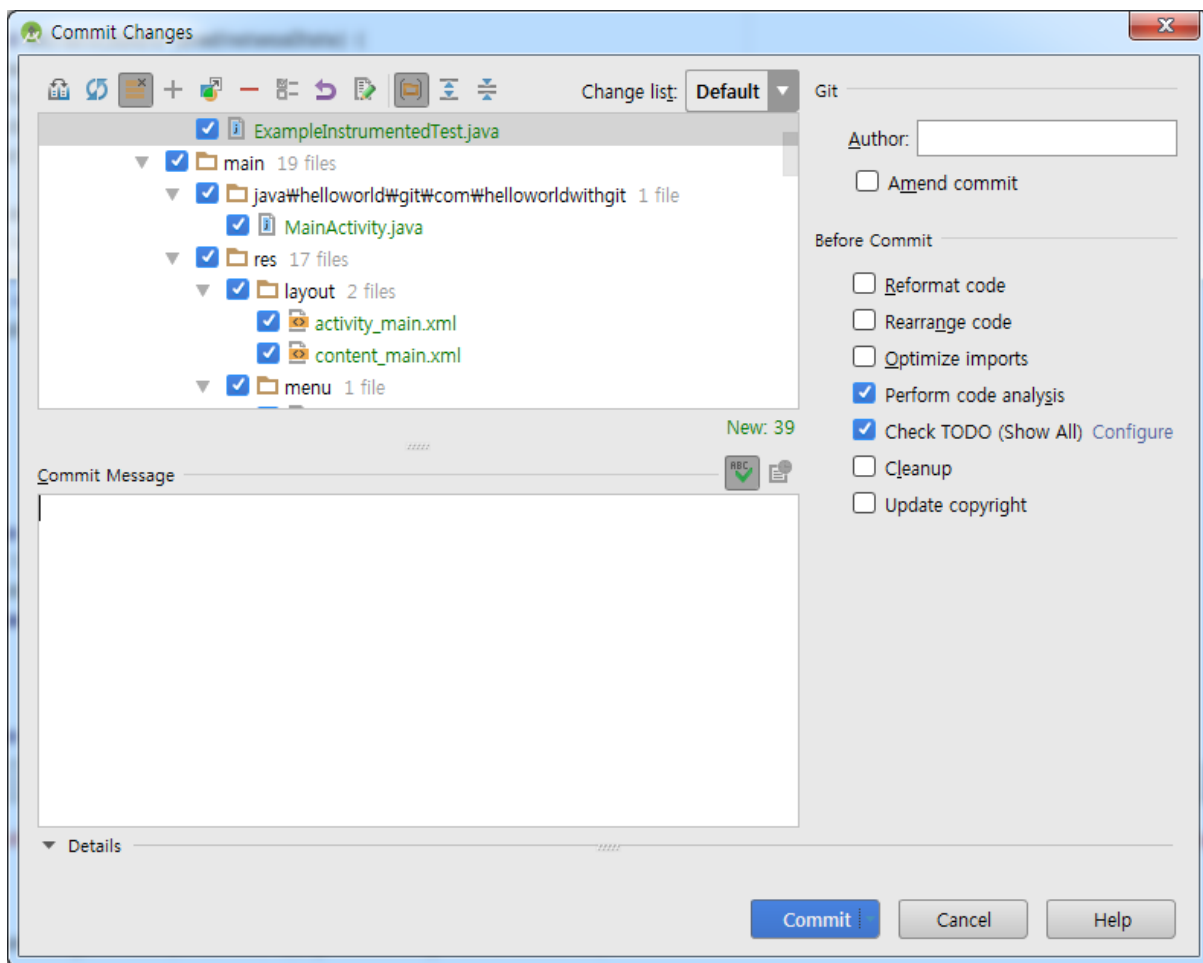


Android Studio 테스트 + Git 설정

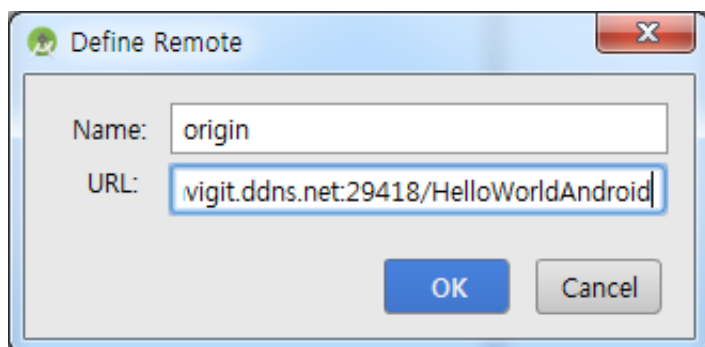
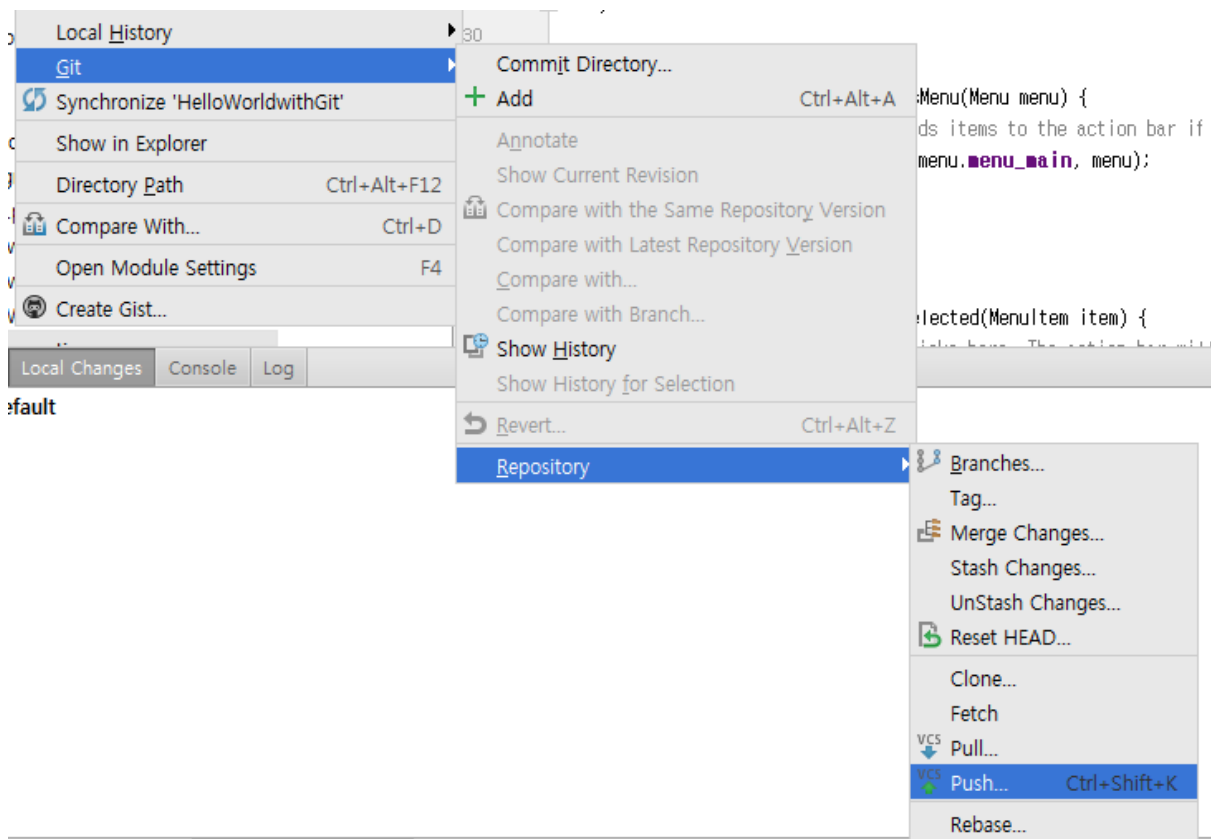
Git 설정

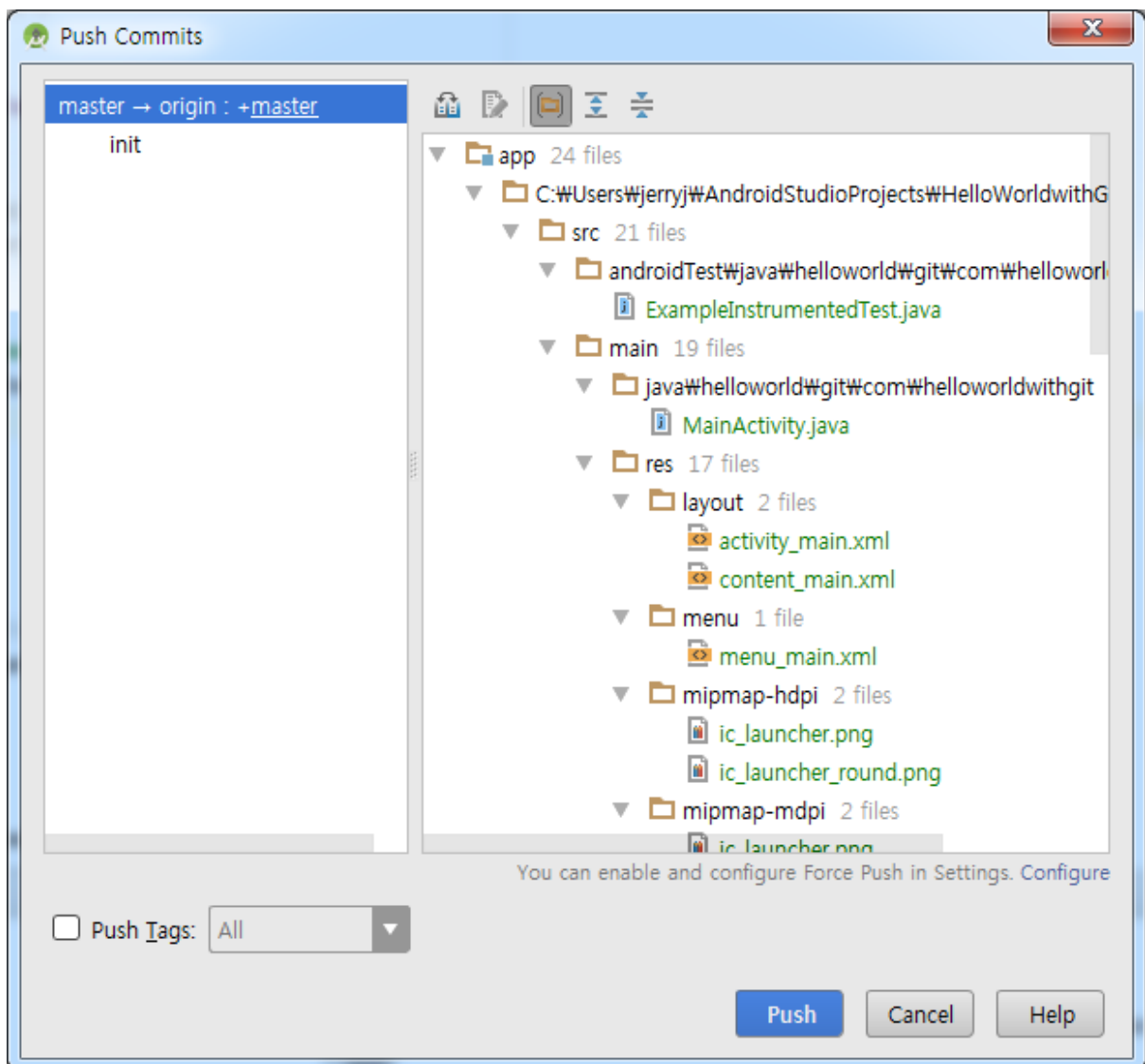




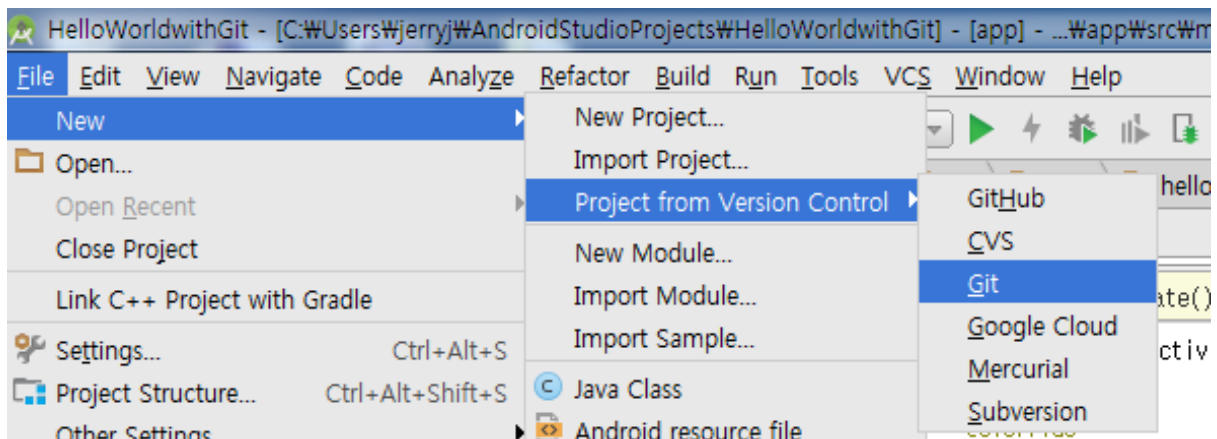
```
C:\Users\jerryj\AndroidStudioProjects\HelloWorldwithGit>git status
On branch master
nothing to commit, working tree clean
```

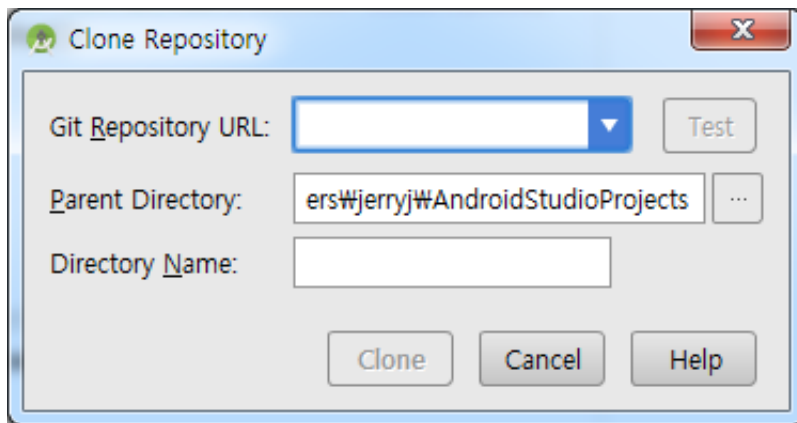
```
C:\Users\jerryj\AndroidStudioProjects\HelloWorldwithGit>
```



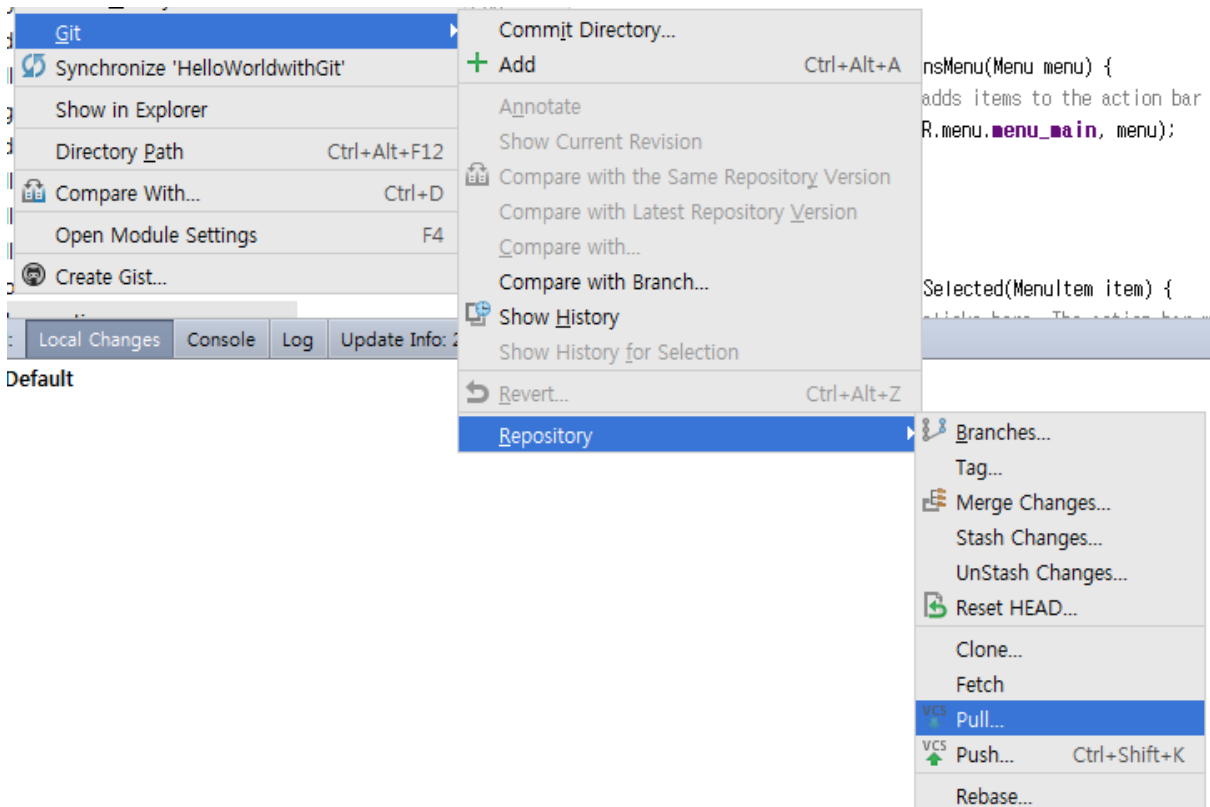


Git Clone



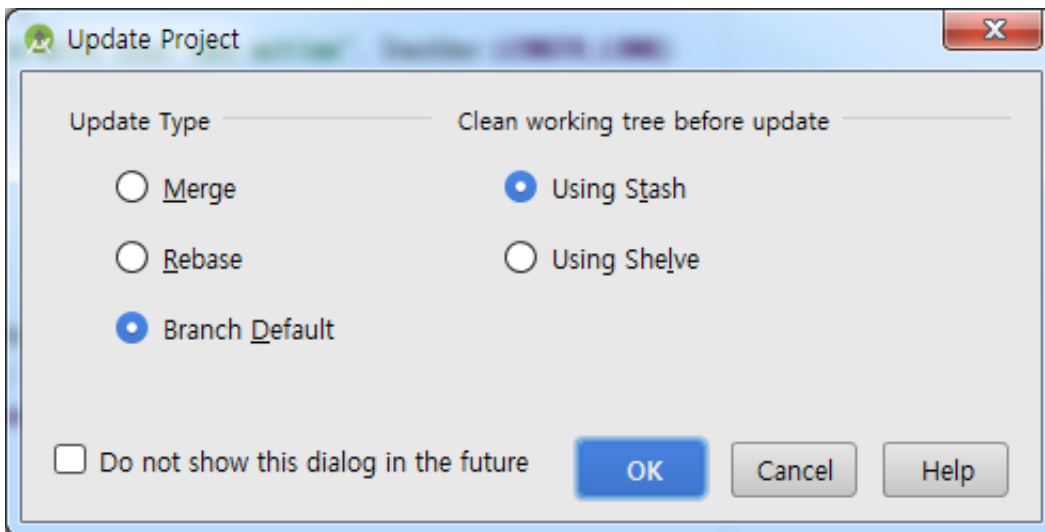


Git Pull & Rebase

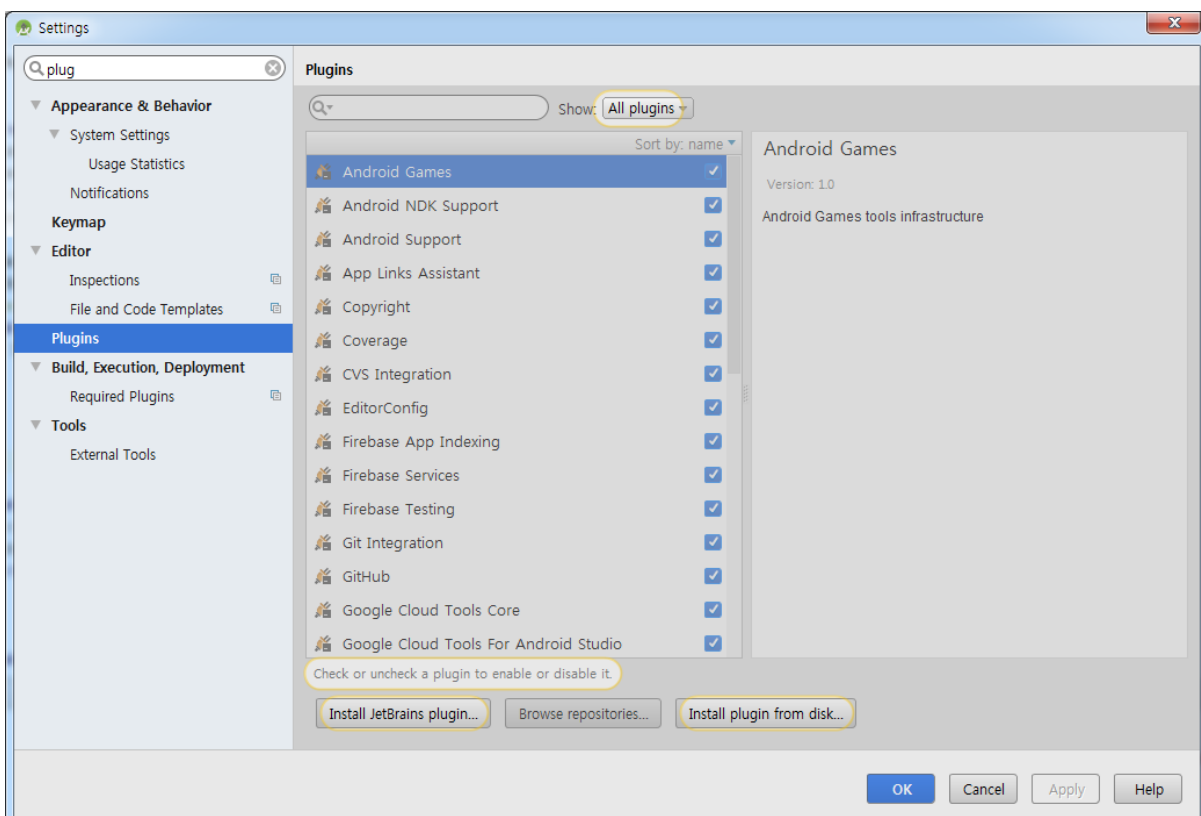


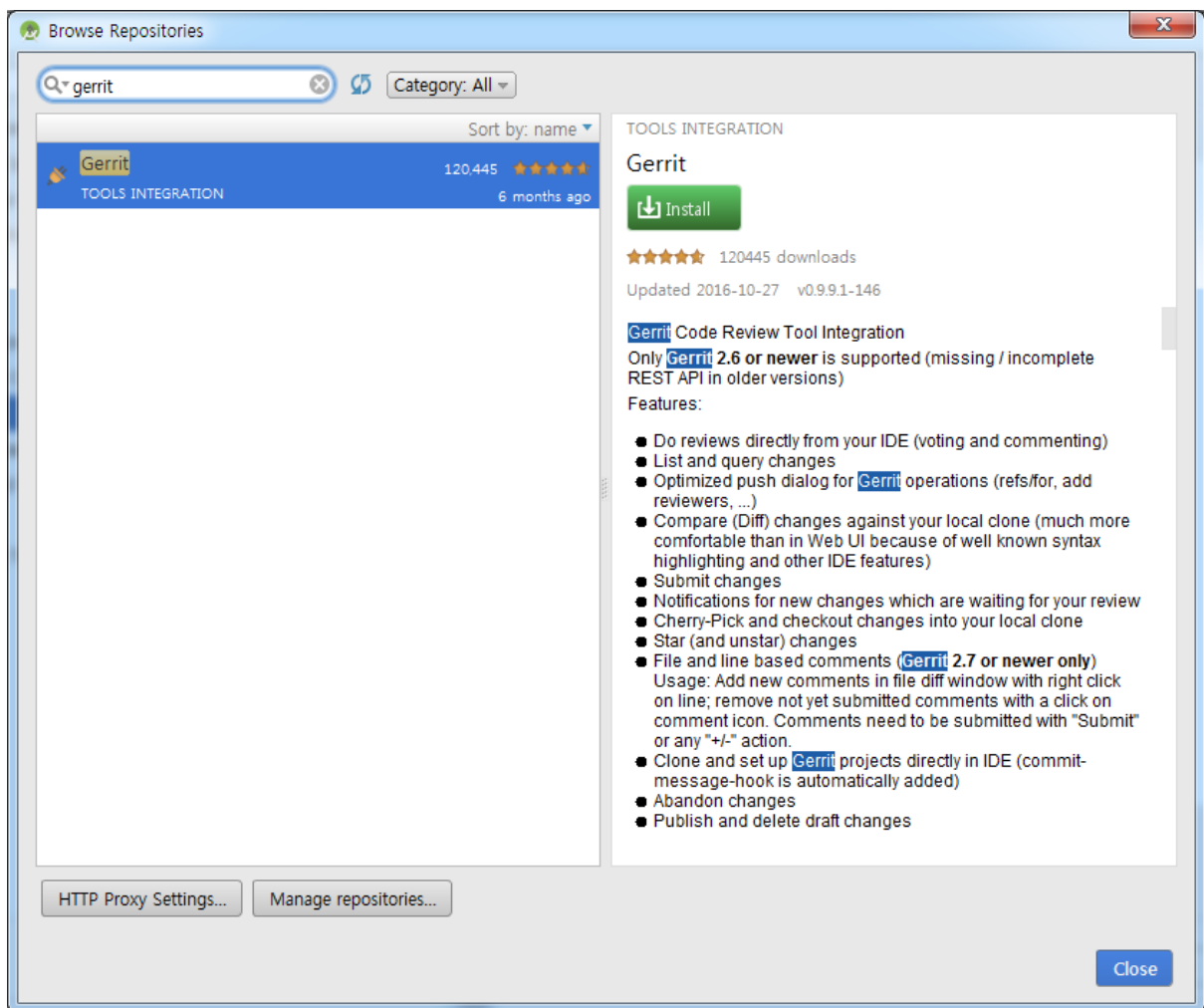
기타

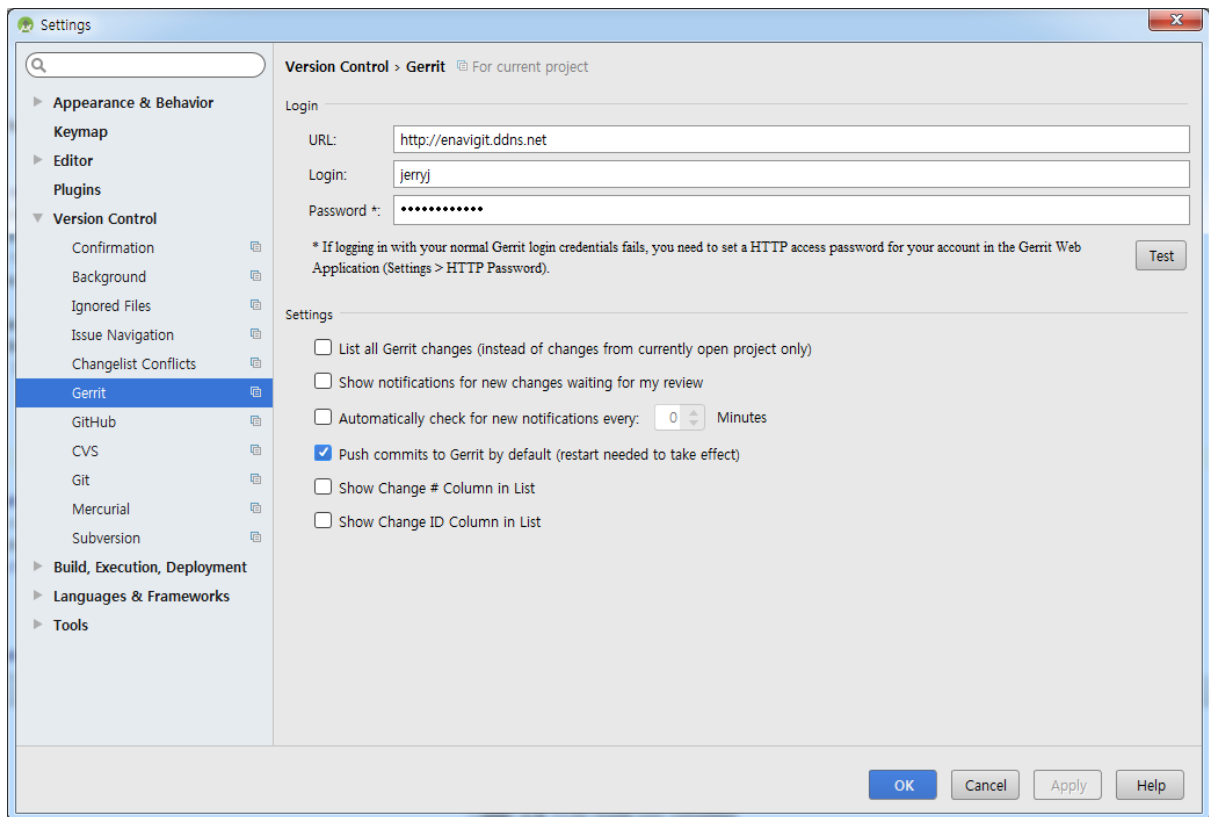




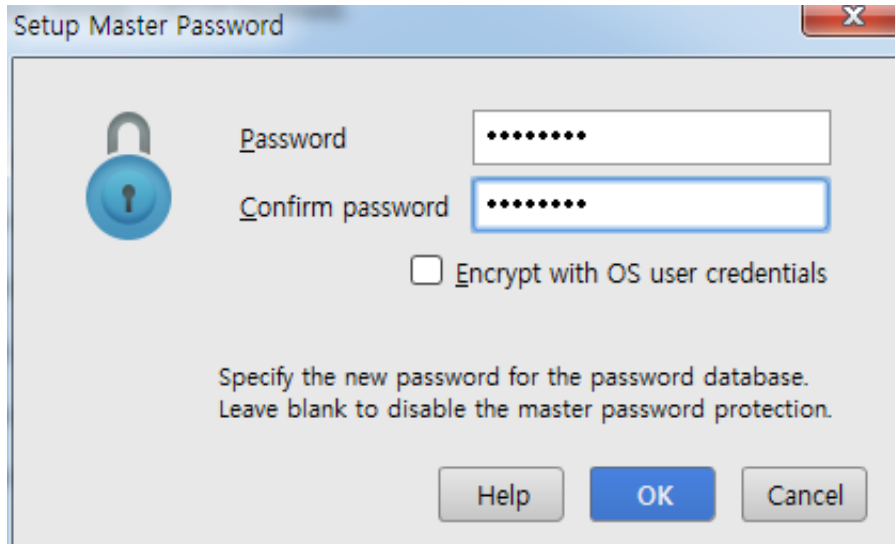
Gerrit Plugin

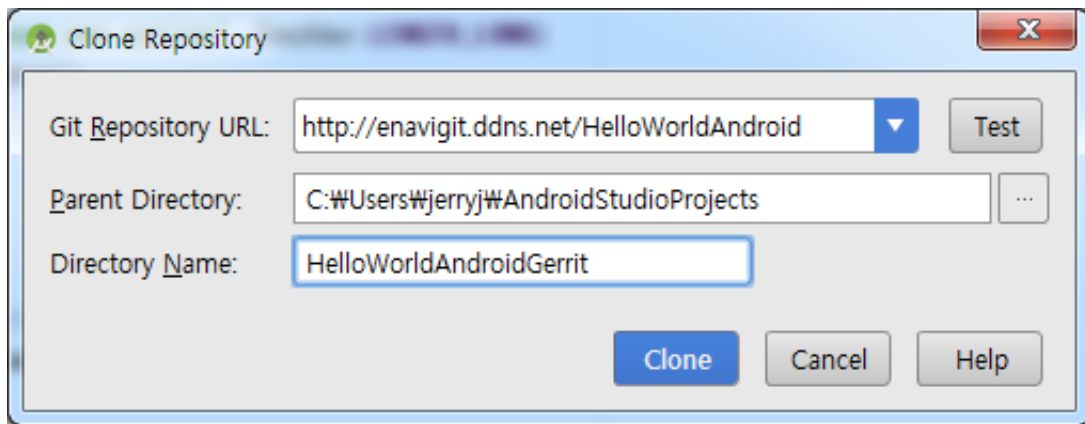




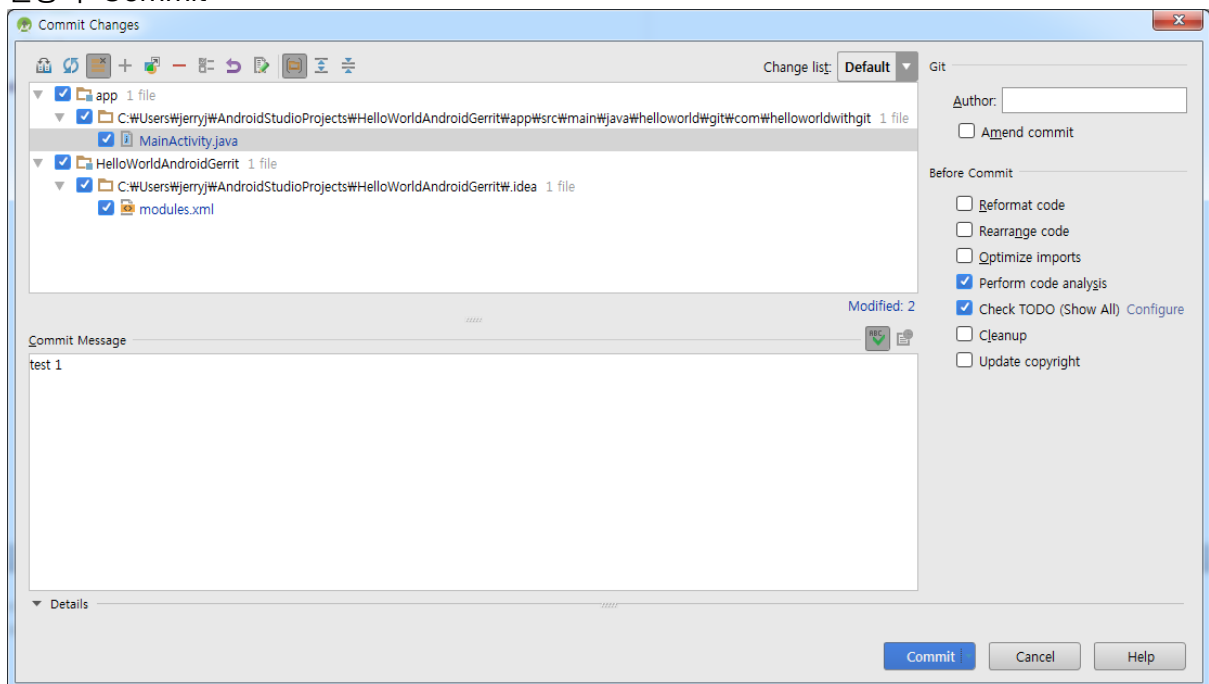


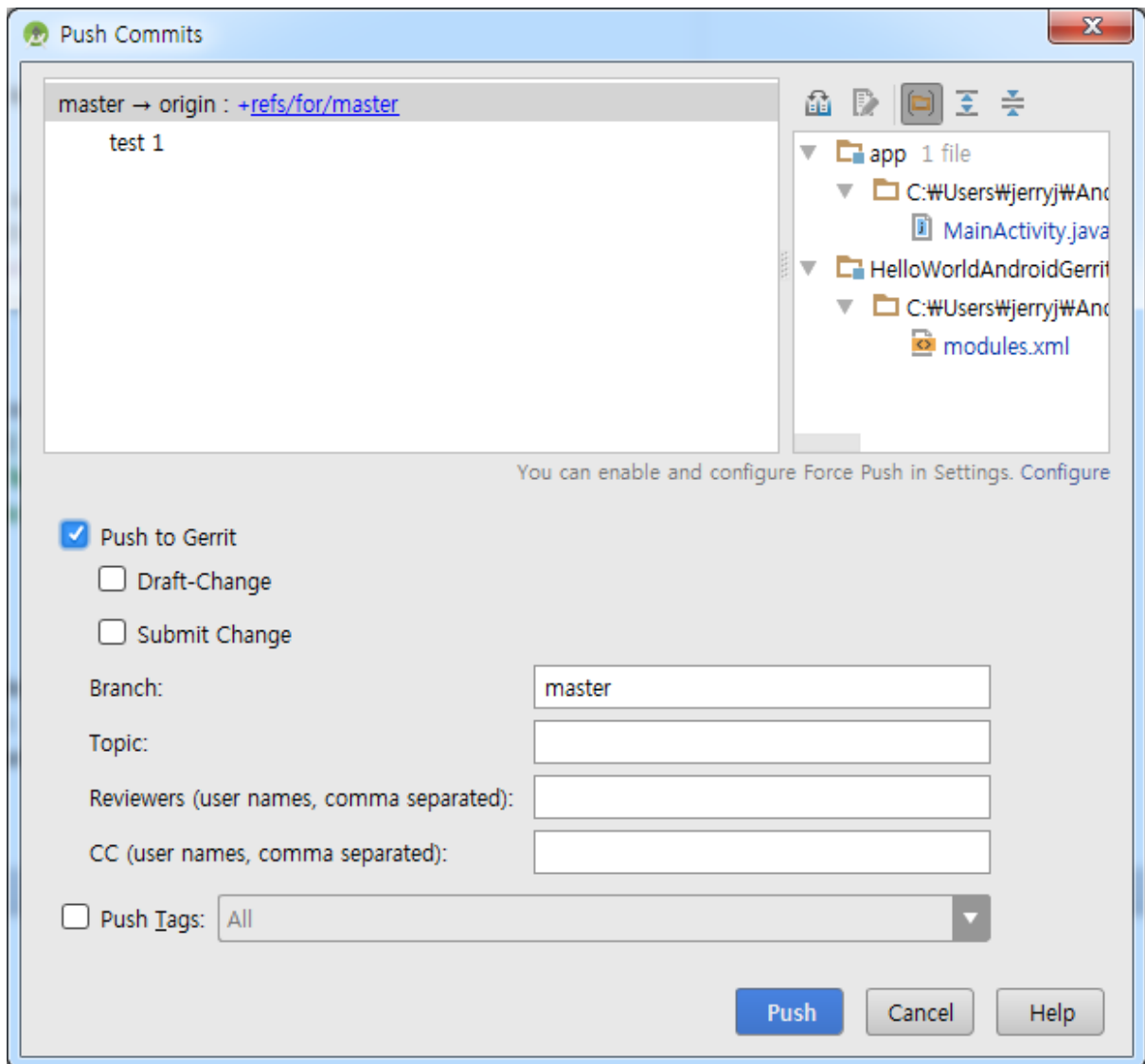
==> HTTP만 지원? (REST 라서 Yes)





변경 후 Commit







Window Login 화면이 나오고 <http://<gerrit site>> 에 대한 로그인 하라고 나오는데 아래에서 지정한 HTTP Password를 사용해야 함

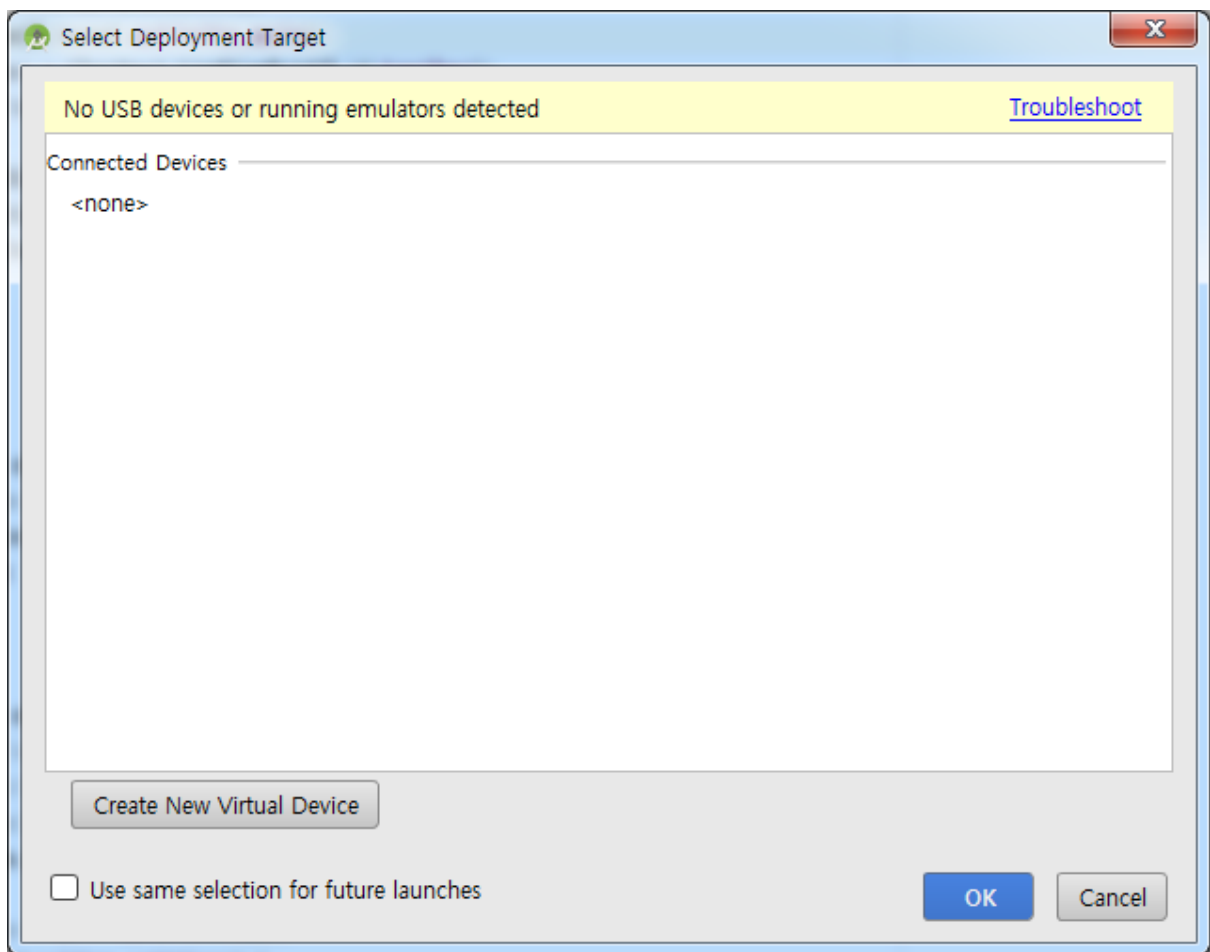
Settings

- Profile
- Preferences
- Diff Preferences
- Edit Preferences
- Watched Projects
- Contact Information
- SSH Public Keys
- HTTP Password
- Identities
- Groups

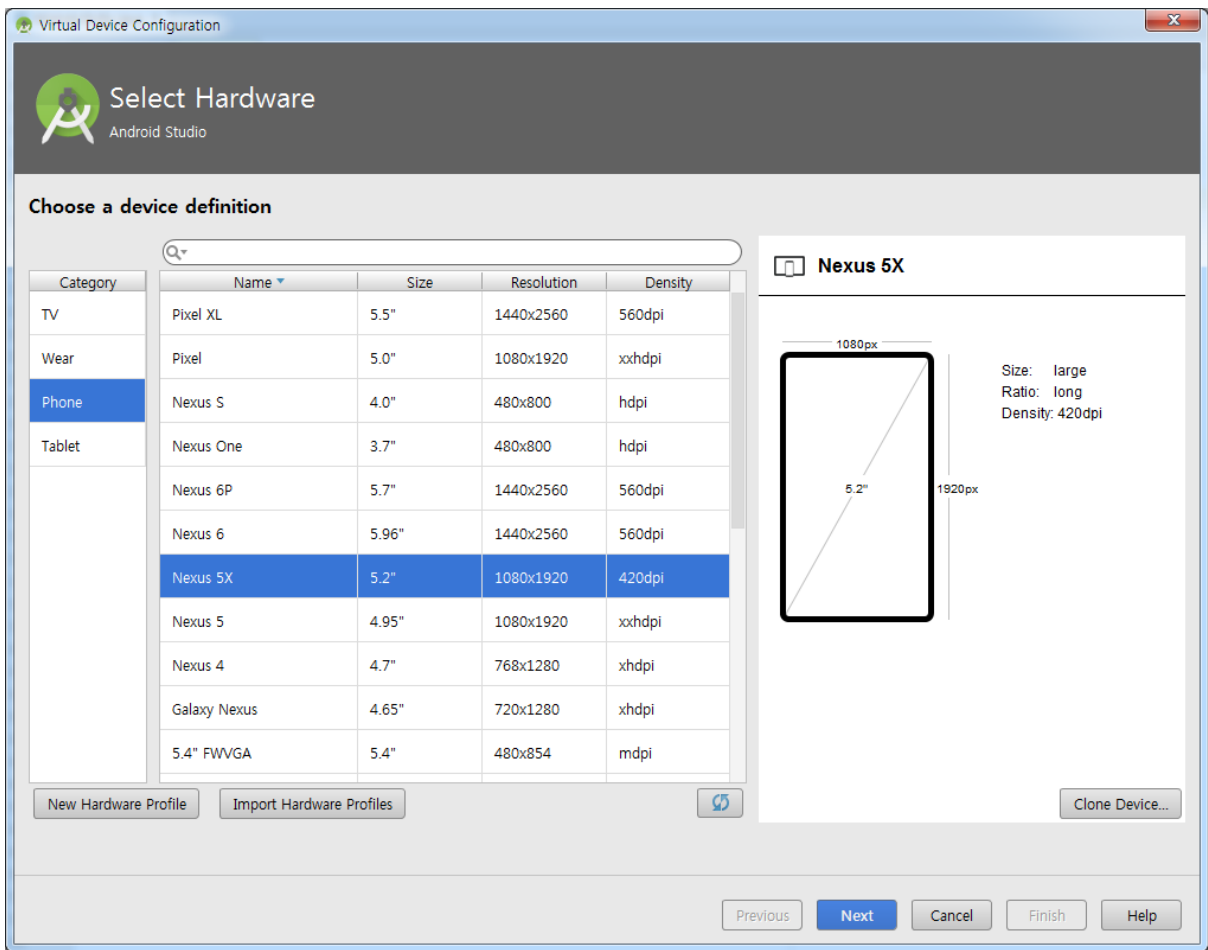
<i>Username</i>	jerryj 
<i>Password</i>	(click 'generate' to revoke an old password) 
<input type="button" value="Generate Password"/>	

Android 에뮬레이터는 Parallels 안에서는 VT-x 활성화 때문에 실패

Create New Virtual Machine



하드웨어 선택



Android SDK 다운로드

Virtual Device Configuration


System Image
Android Studio

Select a system image

Recommended x86 Images Other Images

Release Name	API Level	ABI	Target
Nougat Download	25	x86	Android 7.1.1 (with Google APIs)
Nougat Download	24	x86	Android 7.0 (with Google APIs)
Marshmallow Download	23	x86	Android 6.0 (with Google APIs)
Lollipop Download	22	x86	Android 5.1 (with Google APIs)

Lollipop



API Level
22

Android
5.1


Google Inc.


System Image
x86

Recommendation
Android Emulator is incompatible with Hyper-V.
[Turn off Hyper-V](#)

These images are recommended because they run the fastest and include support for Google APIs

Questions on API level?
See the [API level distribution chart](#)



 A system image must be selected to continue.

Previous Next Cancel Finish Help

Virtual Device Configuration

System Image


Android Studio

Select a system image

Recommended x86 Images Other Images

Release Name	API Level	ABI	Target
Nougat Download	25	x86	Android 7.1.1 (with Google APIs)
Nougat Download	24	x86	Android 7.0 (with Google APIs)
Marshmallow Download	23	x86	Android 6.0 (with Google APIs)
Lollipop	22	x86	Android 5.1 (with Google APIs)

Lollipop



API Level
22

Android
5.1

Google Inc.

System Image
x86

Recommendation
Android Emulator is incompatible with Hyper-V.
[Turn off Hyper-V](#)

These images are recommended because they run the fastest and include support for Google APIs

Questions on API level?
See the [API level distribution chart](#)

Previous Next Cancel Finish Help



Virtual Device Configuration

Android Virtual Device (AVD)

Android Studio

Verify Configuration

AVD Name:

 Nexus 5X	5.2 1080x1920 xxhdpi	<input type="button" value="Change..."/>
 Lollipop	Android 5.1 x86	<input type="button" value="Change..."/>

Startup orientation: Portrait Landscape

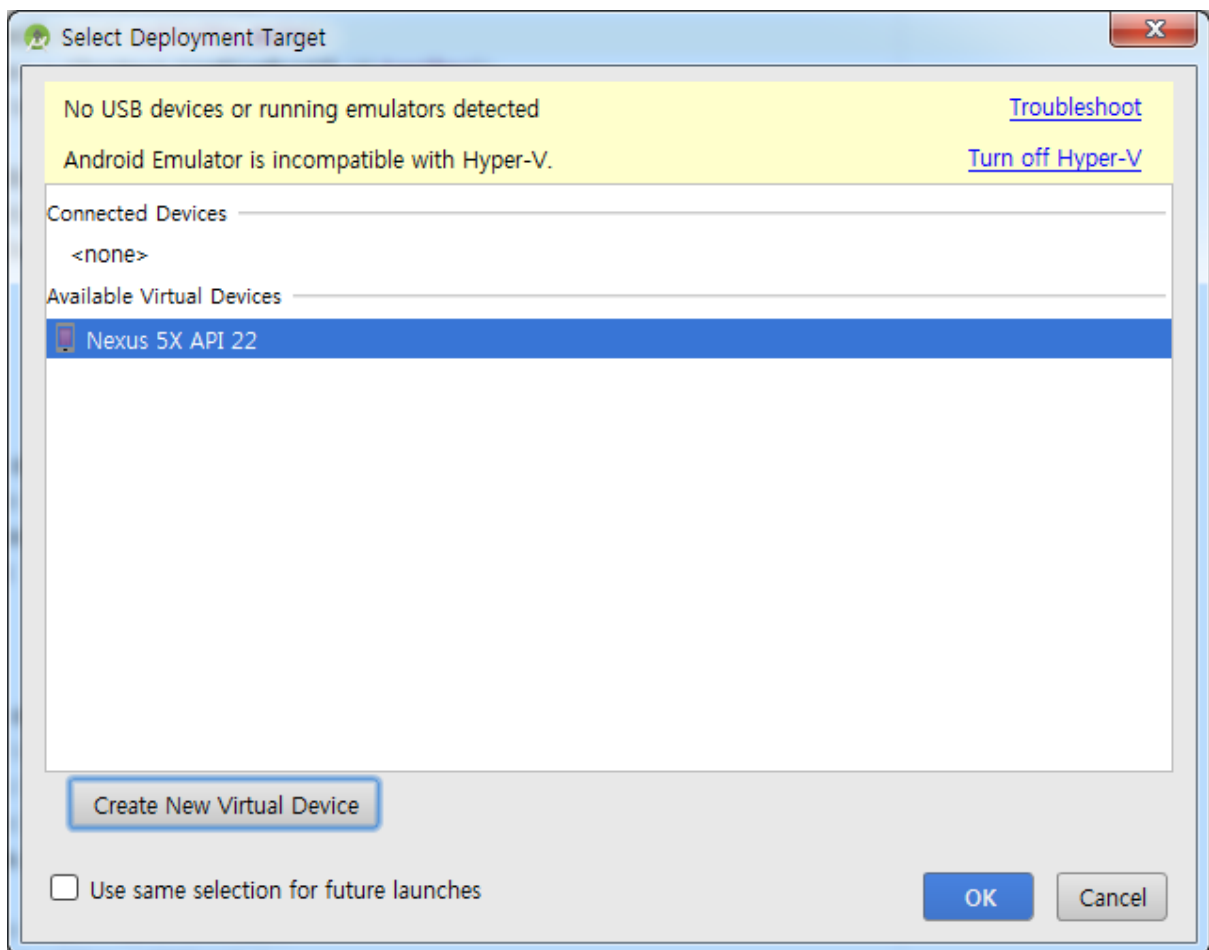
Emulated Performance: Graphics:

Device Frame: Enable Device Frame

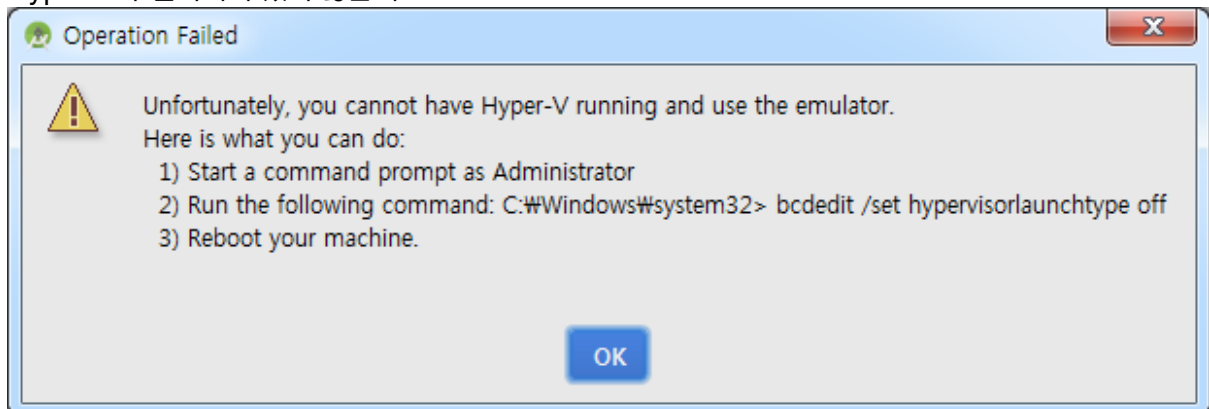
AVD Name

The name of this AVD.

Recommendation
Android Emulator is incompatible with Hyper-V.
[Turn off Hyper-V](#)




Hyper-V가 설치되어 있지 않음에도...




▼ Before launch: Gradle-aware Make, Activate tool window



 Gradle-aware Make

Show this page Activate tool window

 **Error:** Gradle project sync failed. Please fix your project and try again.